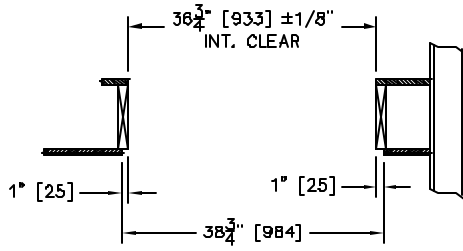
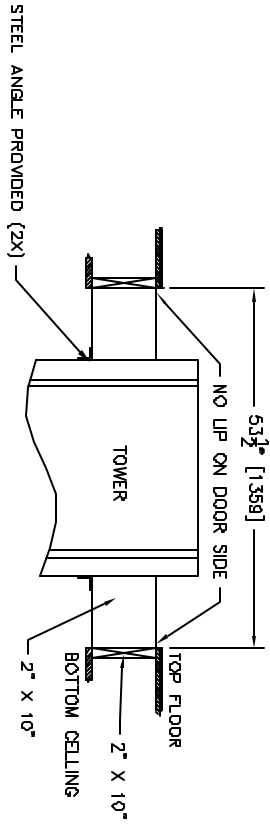
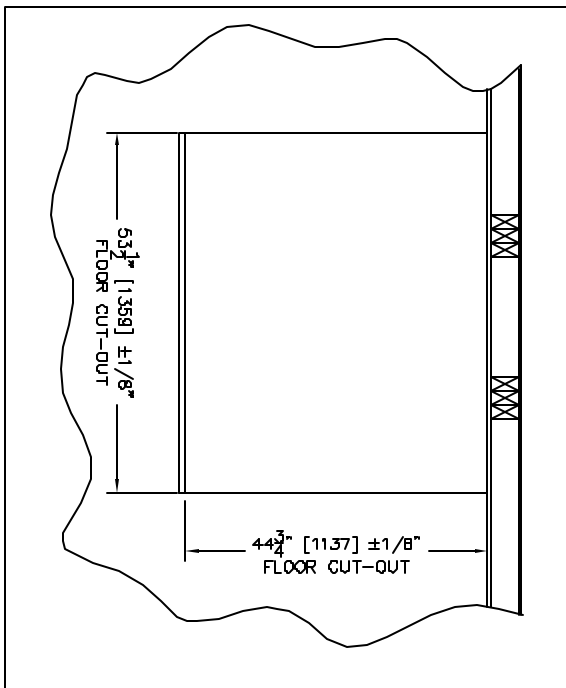
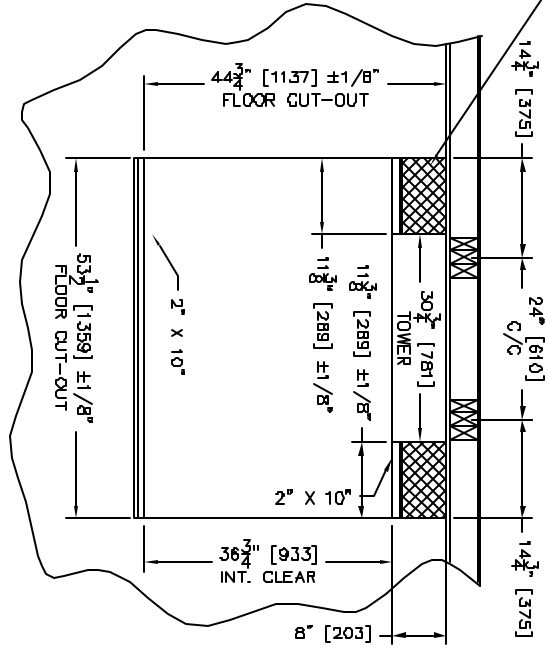


THE HATCHED PARTS ON EACH SIDE OF THE TOWER NEED TO SUPPORT THE WEIGHT APPLIED ON THE FLOOR PLUG. THEY CAN BE BUILT AFTER THE INSTALLATION AND FASTENED TO THE SIDE OF THE TOWER



FLOOR CUT-OUT FOR A 30" X 47", TYPE III TELECAB (TRADITIONAL OR PREMIUM) WITH 2 DOORS



STEEL ANGLE PROVIDED (2X)